

# JOURNAL OF THE AMERICAN PHARMACEUTICAL ASSOCIATION

VOL. XXII

JANUARY, 1933

No. 1

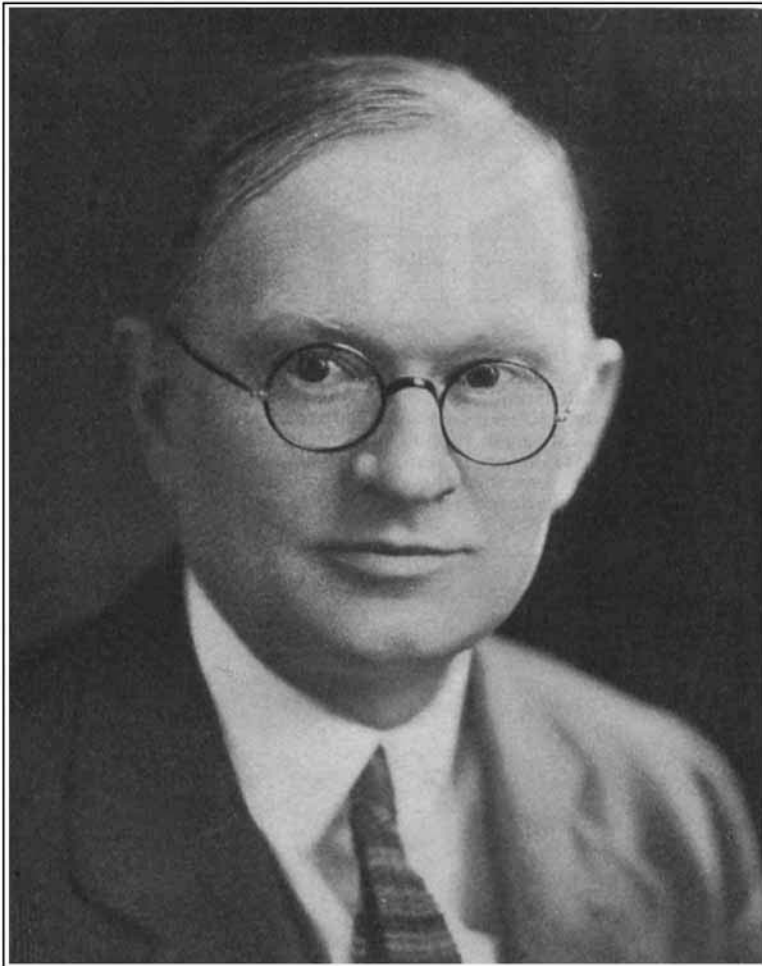
## THE PRESIDENT-ELECT OF THE AMERICAN PHARMACEUTICAL ASSOCIATION.

The president-elect for 1933-1934, of the AMERICAN PHARMACEUTICAL ASSOCIATION, is a native of the State first to sign the Federal Constitution and named in honor of one of the early governors of Virginia; the state of his adoption is Maryland.

Robert Lee Swain, son of the late Rev. C. P. Swain, and Martha H. (née Messick) Swain, was born at Redden, Sussex County, Delaware, September 29, 1887, where he received his earlier education; later, the young man completed the course at Dover High School and thereafter entered the School of Pharmacy, University of Maryland, from which institution he graduated in 1900. Mr. Swain purchased a pharmacy in Sykesville, Md., which he conducted successfully until 1927, when other duties made it necessary for him to dispose of it. In 1922, he was elected Deputy Food and Drug Commissioner of Maryland, an office he still holds and the duties of which are being discharged in the interest of the State, the benefit of its citizens and reflect credit upon him.

Governor Ritchie, in 1920, appointed him member of the Maryland Board of Pharmacy and reappointed him in 1925, since which time he has served as its *Secretary-Treasurer*. He makes effective his belief in coöperation of the drug-trade activities, with pharmacy as fundamental, and the service of the public. Soon after graduation he became a member of the Maryland Pharmaceutical Association to which body he has rendered distinguished services, not the least of which is as editor of the *Maryland Pharmacist*—an outstanding publication, because the purposes of its establishment are the guide-posts; contact with state and national affairs are maintained, with a realization that the benefits are reciprocal and promote pharmacy as a Public Health service. He has an active part in State Association affairs, in coördinating its program and activities.

The president elect became a member of the AMERICAN PHARMACEUTICAL ASSOCIATION in 1909, and has been a regular attendant at its annual meetings, participating actively at its sessions and during the interim; he served as president

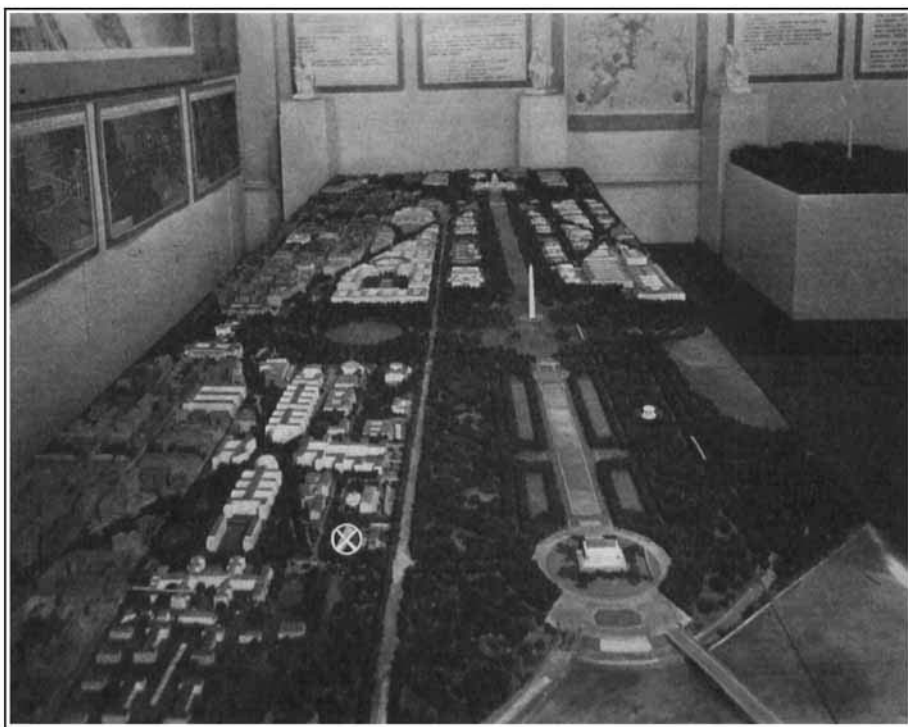


ROBERT L. SWAIN.

of the Baltimore Branch, A. Ph. A., for two terms; in 1928 Mr. Swain was elected vice-chairman of the House of Delegates and, in 1929, chairman. He is chairman of the Committee on Pharmacy Corps in the U. S. Army. His vocational duties have contributed largely to his committee work, thus, through his suggestion the Conference of Law Enforcement Officials was established and has become an important part of the ASSOCIATION'S activities. He has been chairman since its establishment.

Likewise, his interest in educational affairs is evidenced and reflected in his reports and contributions to various programs. His reports are clearly stated, his addresses are forceful and worth while messages; all of them evidence thought, study and purpose.

Since the publication of a prior sketch in 1929,<sup>1</sup> the president-elect has completed the course in law of the School of Law, University of Maryland—earned his degree and the right to practice law.



*Underwood & Underwood*

The above shows the newly completed model of down-town Washington's transformation in the section where the Pharmacy Building is located. The model is to be shown at the Chicago World's Fair. The Memorial Bridge, Lincoln Memorial and Washington Monument are easily located. The Headquarters site is indicated by circle and cross.

---

<sup>1</sup> November JOURNAL, 1929, page 1101.